



Verband Hamburger
und Bremer
Schiffsmakler e.V.

New ConTex Container Ship Time Charter Assessment Index

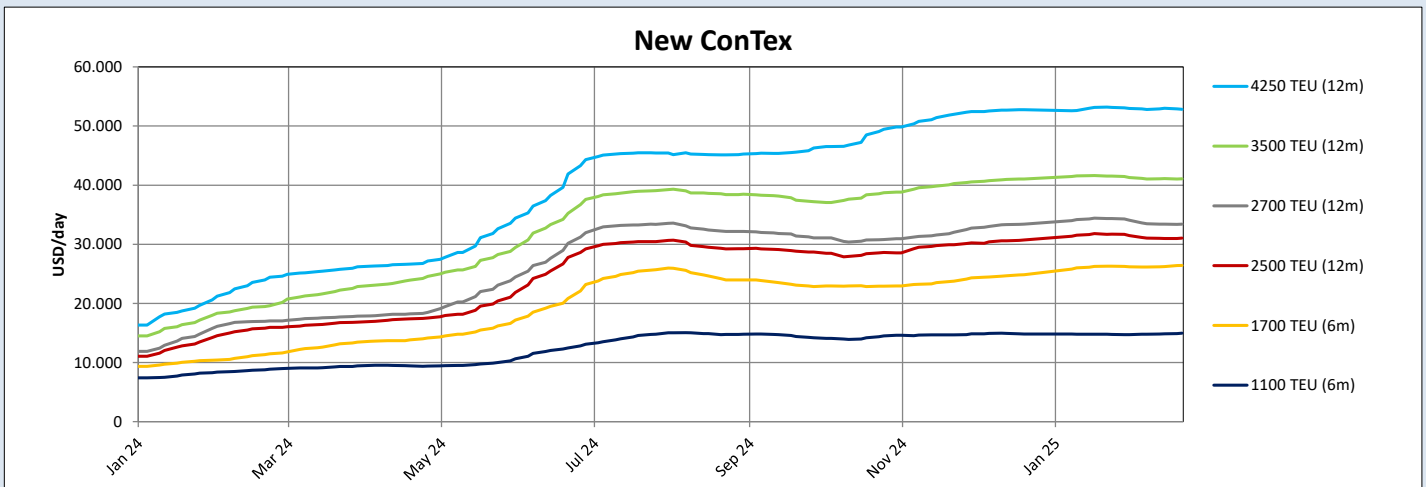
New ConTex*		1416	
20.02.25		6 mos	12 mos
Geared	1100 TEU	\$14.957	n.a.
	1700 TEU	\$26.423	
	2500 TEU	\$31.050	
Gearless	2700 TEU	n.a.	\$33.398
	3500 TEU		\$41.065
	4250 TEU		\$52.813

Legend		
↑	up	+ 2% or more
↗	steady up	from +1% to +1,9%
→	steady	+/- 1%
↘	steady down	from -1% to -1,9%
↓	down	- 2% or less

*New ConTex evaluation is EXCLUDING 1800 TEU for 6 months period, 1100/1700/5700/6500 TEU groups for 12 months period & 2500/2700/3500/4250 TEU groups for 24 months period

New ConTex-Commentary - issued:	20.02.25
<p>The container charter markets showed continuous resistance against falling freight rates this week. The Shanghai Containerized Freight Index (SCFI), which has been dropping sharply for a while, declined by 9.31% week-on-week to close at 1595,08 points today, which is about 57 percent less than its last peak in July 2024. The container charter market continued to remain stable at high levels across most vessel size segments. Consequently, the New ConTex followed this trend with hardly any change (+2 points (0.3%)) week-on-week. Tonnage supply for vessels in the 2500 TEU range and larger remains tight for the foreseeable future, and also the availability of the next smaller ships, the 1700 TEUs, diminished quite a lot during the past weeks. Consequently, those ships recorded most gains recently, with charter rates of USD 23489 for 12-month periods for 1700 TEU vessels increasing by 1,1 percent week-on-week and 2,7 percent month-on-month. The segments of 2500 TEU and larger have been moving sideways for quite some time but are still up decently on a year-on-year basis. With USD 27382, 24-month charter rates for the 2700 TEU segment declined by 0,3 percent week-on-week but remain above last year's levels with an increase of 86,3 percent year-on-year.</p>	

New ConTex Development												
Vessel type	Evaluated Period	Today	Week-on-Week		Month-on-Month		Year-on-Year					
		20.02.25	13.02.25	Change	Change	23.01.25	Change	Change	22.02.24	Change	Change	
New ConTex*		1416	1414	2	⇒ 0,1%	1429	-13	⇒ -0,9%	697	719	↑ 103,2%	
1100 TEU	6 mos	\$14.957	\$14.845	\$112	⇒ 0,8%	\$14.750	\$207	⇒ 1,4%	\$8.873	\$6.084	↑ 68,6%	
	12 mos	\$14.218	\$14.098	\$120	⇒ 0,9%	\$13.984	\$234	⇒ 1,7%	\$8.184	\$6.034	↑ 73,7%	
1700 TEU	6 mos	\$26.423	\$26.236	\$187	⇒ 0,7%	\$26.292	\$131	⇒ 0,5%	\$11.482	\$14.941	↑ 130,1%	
	12 mos	\$23.489	\$23.227	\$262	⇒ 1,1%	\$22.873	\$616	⇒ 2,7%	\$10.534	\$12.955	↑ 123,0%	
1800 TEU	6 mos	\$30.109	\$29.923	\$186	⇒ 0,6%	\$30.145	-\$36	⇒ -0,1%	\$13.684	\$16.425	↑ 120,0%	
2500 TEU	12 mos	\$31.050	\$30.982	\$68	⇒ 0,2%	\$31.709	-\$659	⇒ -2,1%	\$15.939	\$15.111	↑ 94,8%	
	24 mos	\$25.605	\$25.582	\$23	⇒ 0,1%	\$26.364	-\$759	⇒ -2,9%	\$13.509	\$12.096	↑ 89,5%	
2700 TEU	12 mos	\$33.398	\$33.395	\$3	⇒ 0,0%	\$34.336	-\$938	⇒ -2,7%	\$17.020	\$16.378	↑ 96,2%	
	24 mos	\$27.382	\$27.468	-\$86	⇒ -0,3%	\$28.232	-\$850	⇒ -3,0%	\$14.698	\$12.684	↑ 86,3%	
3500 TEU	12 mos	\$41.065	\$41.110	-\$45	⇒ -0,1%	\$41.520	-\$455	⇒ -1,1%	\$19.600	\$21.465	↑ 109,5%	
	24 mos	\$32.820	\$32.960	-\$140	⇒ -0,4%	\$33.350	-\$530	⇒ -1,6%	\$17.155	\$15.665	↑ 91,3%	
4250 TEU	12 mos	\$52.813	\$52.995	-\$182	⇒ -0,3%	\$53.135	-\$322	⇒ -0,6%	\$24.425	\$28.388	↑ 116,2%	
	24 mos	\$40.785	\$40.570	\$215	⇒ 0,5%	\$41.025	-\$240	⇒ -0,6%	\$20.533	\$20.252	↑ 98,6%	
5700 TEU	12 mos	\$60.717	\$60.750	-\$33	⇒ -0,1%	\$60.850	-\$133	⇒ -0,2%	\$30.911	\$29.806	↑ 96,4%	
6500 TEU	12 mos	\$67.756	\$67.822	-\$66	⇒ -0,1%	\$68.033	-\$277	⇒ -0,4%	\$36.556	\$31.200	↑ 85,3%	



Disclaimer

The brand NewConTex is copyrighted by Verband Hamburger und Bremer Schiffsmakler e.V. ("VHBS e.V.") and is protected by law. The NewConTex may be published only with the source reference © VHBS e.V. It is distributed to the general public for information purposes only and cannot be relied upon as a trading recommendation and does not constitute a solicitation to trade. The reported information is obtained from market sources. While every effort has been made to ensure the accuracy and the completeness of the NewConTex, VHBS e.V. makes no representations, conditions or warranties of any kind, express or implied, about the completeness, accuracy, reliability, or suitability of the NewConTex. Any reliance you place on the NewConTex is therefore strictly at your own risk. Neither VHBS e.V. nor any of its subsidiaries or affiliates nor any employee of the foregoing shall be liable or have any responsibility for any loss, liability or damage, cost or expense including without limitation, indirect or consequential loss or damage, or any loss or damage whatsoever arising from loss of data or profits arising out of, or in connection with, the use of and the reliance on the NewConTex, save for death or personal injury arising from VHBS e.V. negligence and fraudulent misrepresentation that cannot, under German law, be excluded.